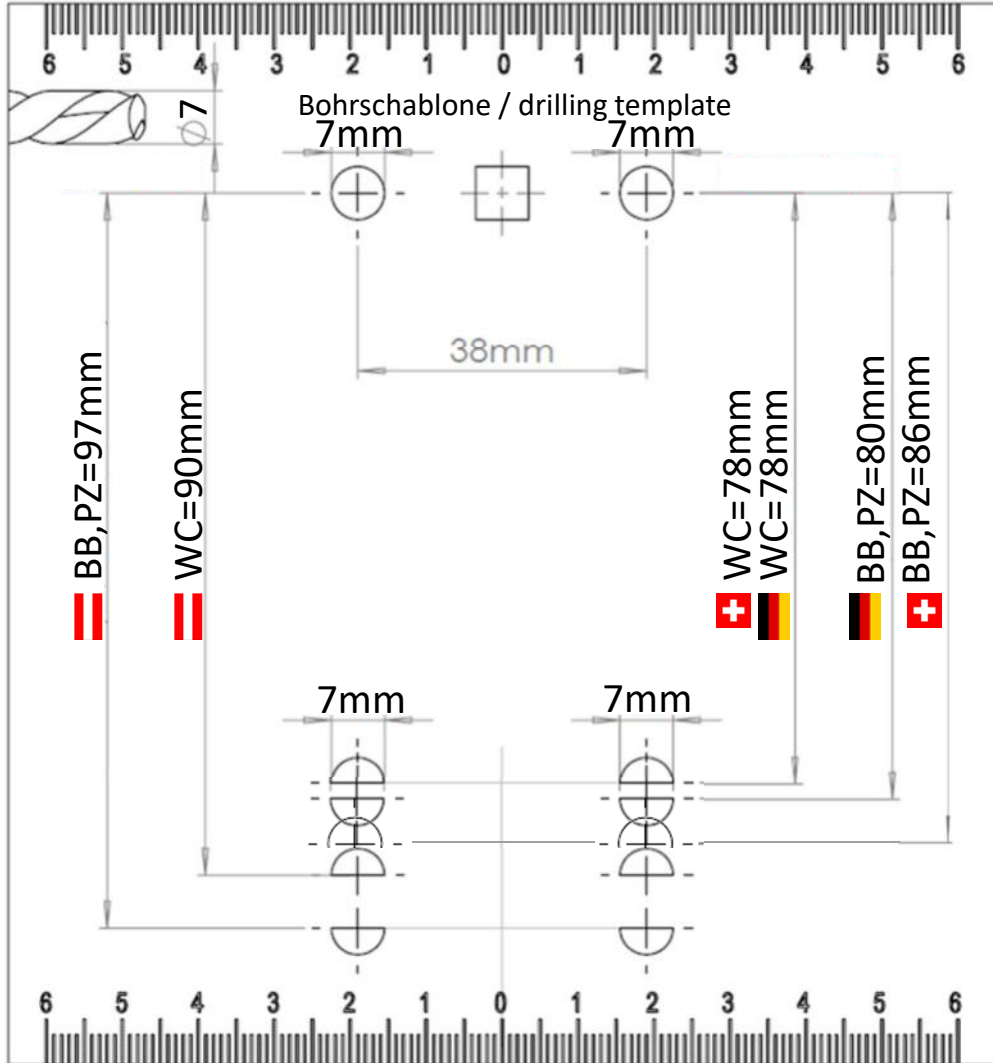
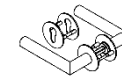
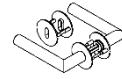


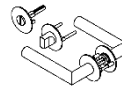
Druckgröße 100 % verwenden 280 x 160mm
 / use print size 100% 280 x 160mm



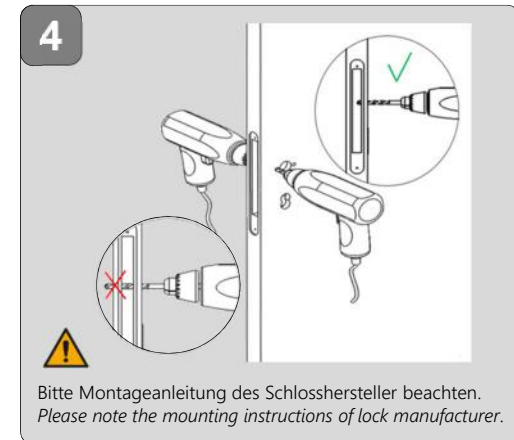
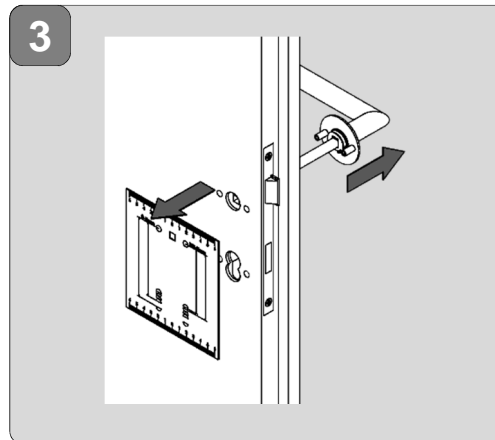
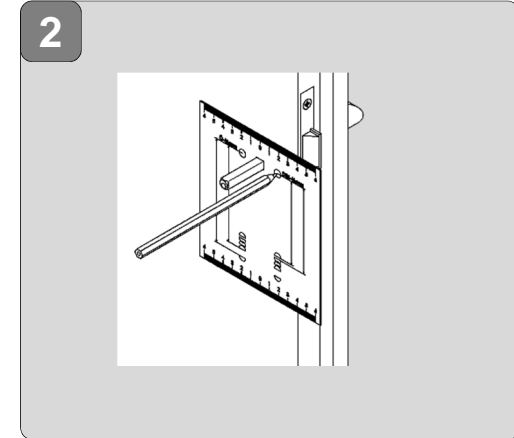
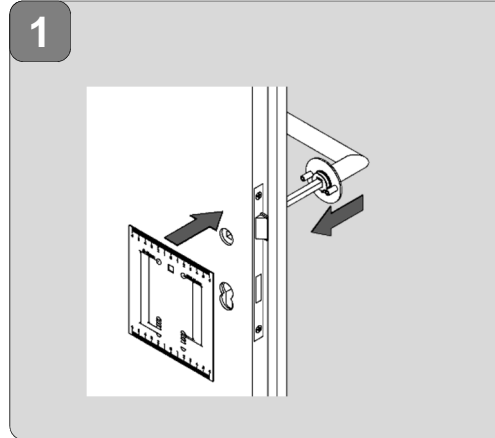
MONTAGEANLEITUNG DRÜCKERGARNITUR PIATTA S MOUNTING INSTRUCTIONS HANDLE SET PIATTA S



1 - 9



1 - 8 + 10



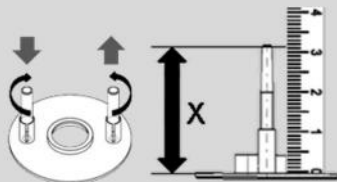
5 Schrauben und Pins entsprechend der Türdicke verwenden /
Use screws and pins according to the door thickness

Türdicke / door thickness	Länge Schraube / length screw	Länge Piatta Pin / length piatta pin
37 - 45mm	M4 x 35mm	33mm
45 - 50mm	M4 x 40mm	38mm
50 - 55mm	M4 x 45mm	43mm
55 - 60mm	M4 x 50mm	48mm

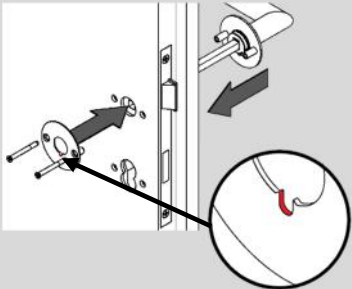
Pins korrekt einstellen /
Set the pins correctly

$$X = T - 6mm$$

T = Türdicke / door thickness

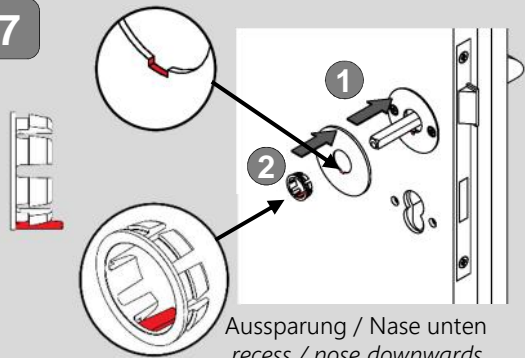


6



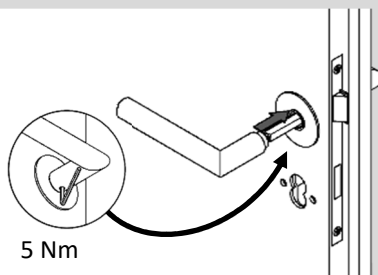
Aussparung nach unten Montieren.
Mount recess downwards.

7



Aussparung / Nase unten
recess / nose downwards

8



5 Nm

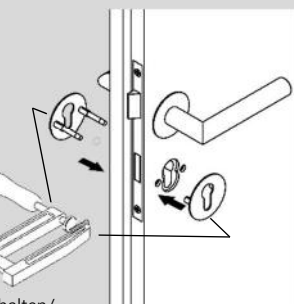
Bei neuer Montage bitte neue Madenschraube verwenden.
Please use new grub screw for new mounting.

9



Zubehör / Option

Nicht in Packung enthalten /
not in the package



10 WC



Nuss Adapter 6x6 auf 8x8
muss verwendet werden
Adapter nut 6x6 to 8x8
must be used

D

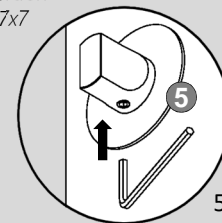


Nuss Adapter 6x6 auf 7x7
muss verwendet werden
Adapter nut 6x6 to 7x7
must be used

AUT



CH



5 Nm

**Demontage /
dismounting**



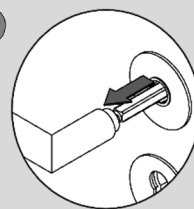
Demontage Griff nur an dem nach Links zeigenden Teil /
Dismounting handle only on the left-facing part

1

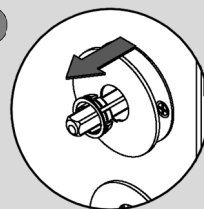


Madenschraube lösen /
loosen the grub screw

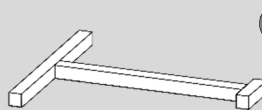
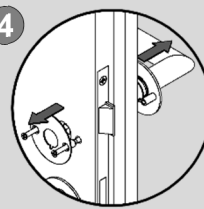
2



3



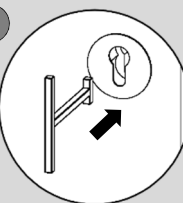
4



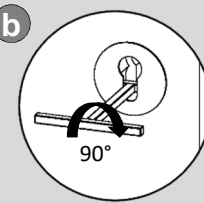
Zubehör / Option

Demontagewerkzeug
nicht im Set enthalten /
disassembly tool
not included in the kit

a

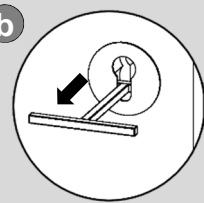


b



90°

b



Technische Änderungen vorbehalten / subject to alterations 04/2018 cq